



## **Tracking Animals for Conservation Elephant Tracking Report No. 1**

We bring you an update of the movement of 19 collared elephants in the Associated Private Nature Reserves (APNR) and Kruger National Park (KNP), South Africa. Most movements have been within the Klaserie-, Umbabat- and Timbavati Private Nature Reserves with only Mac, Tussle, Captain Hook and WESSA moving extensively in Kruger National Park. Only Yvonne has spent much time in Balule Private Nature Reserve.

Whilst we are glad to report the deployment of six replacement collars in February we still hope to replace the remaining five malfunctioning collars belonging to Barry (bull) Caughley (bull), Striburus (bull), Mandy (cow) and Soshangane (bull) and can then include those maps.

To help you understand the elephants and their movements the first position of the month is indicated with a diamond and the last position of the month is indicated with an elephant. Cows all point to the left and bulls to the right.

We would like to use this opportunity to thank all the individuals and organisations who have sponsored collars and collaring operations both in the past and at present.

We hope you find this report enjoyable and informative.  
Save the Elephants – South Africa

**Report prepared by Jess Lavelle  
May 2011**

**P.O. Box 960 Hoedspruit 1380 • Tel: +27 (0)15 7930369  
[www.savetheelephants.org](http://www.savetheelephants.org) go to Regions then South Africa**

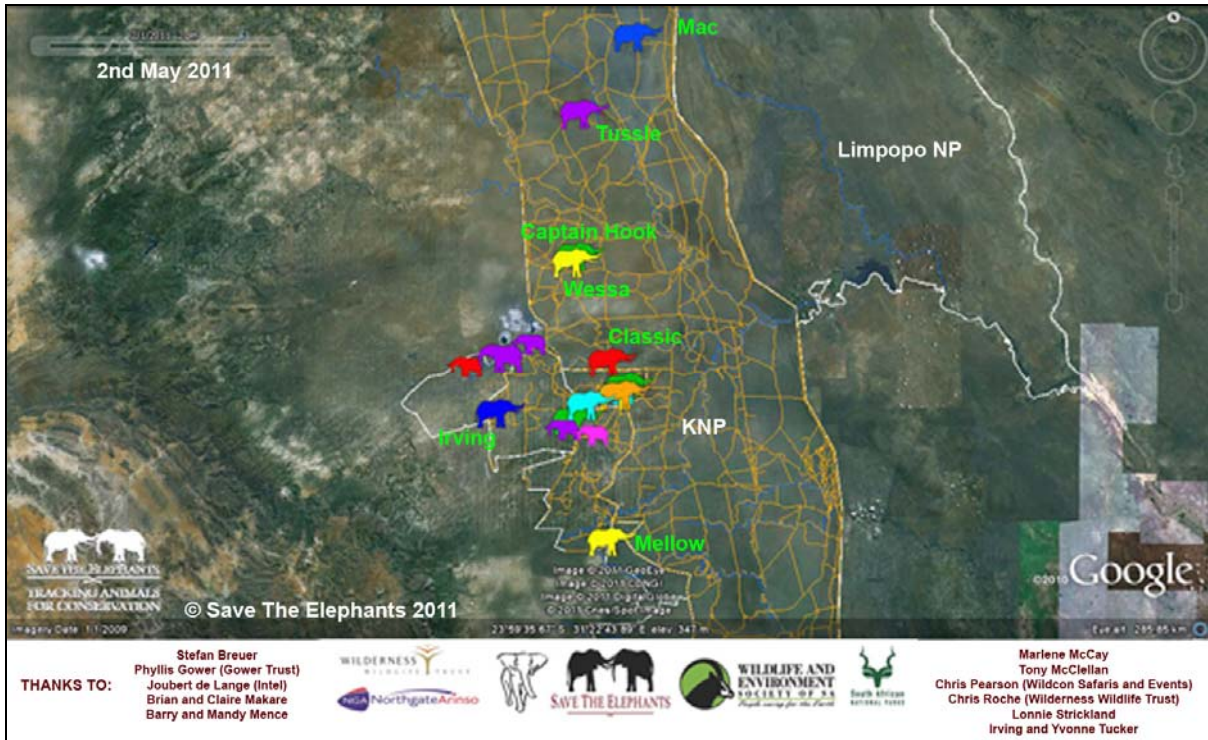


Figure 1: Positions of elephants 2<sup>nd</sup> May 2011

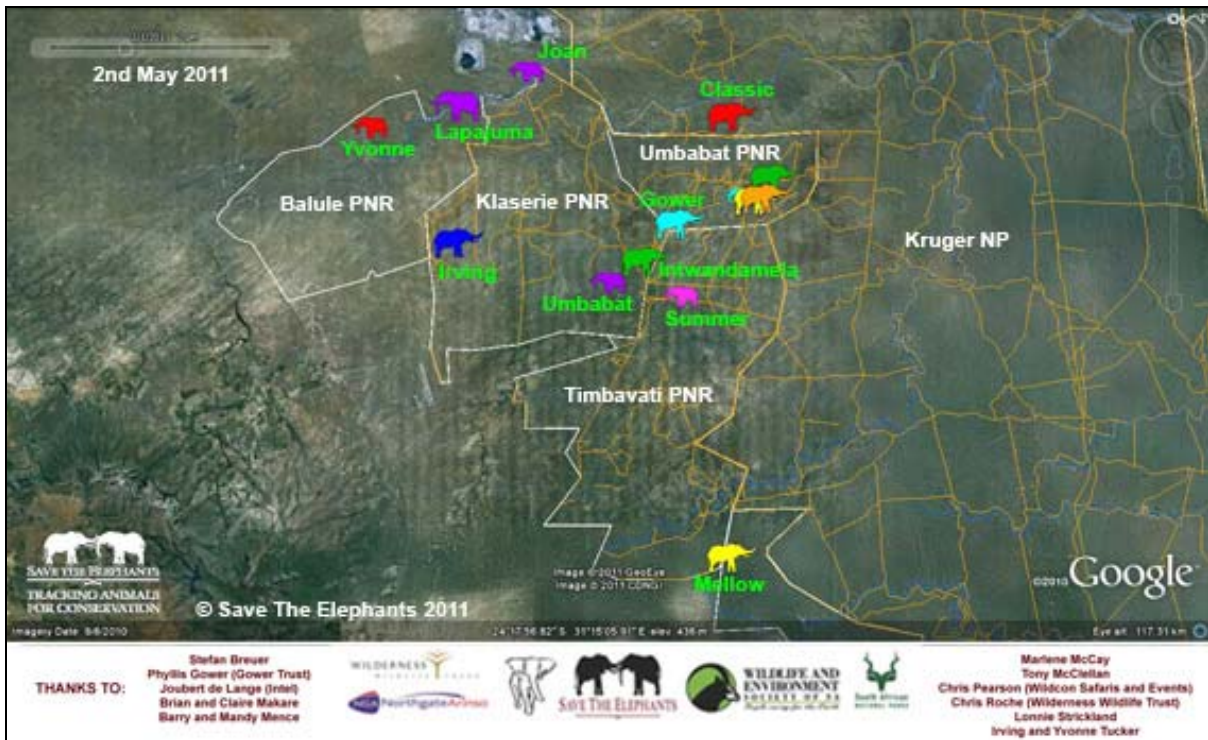
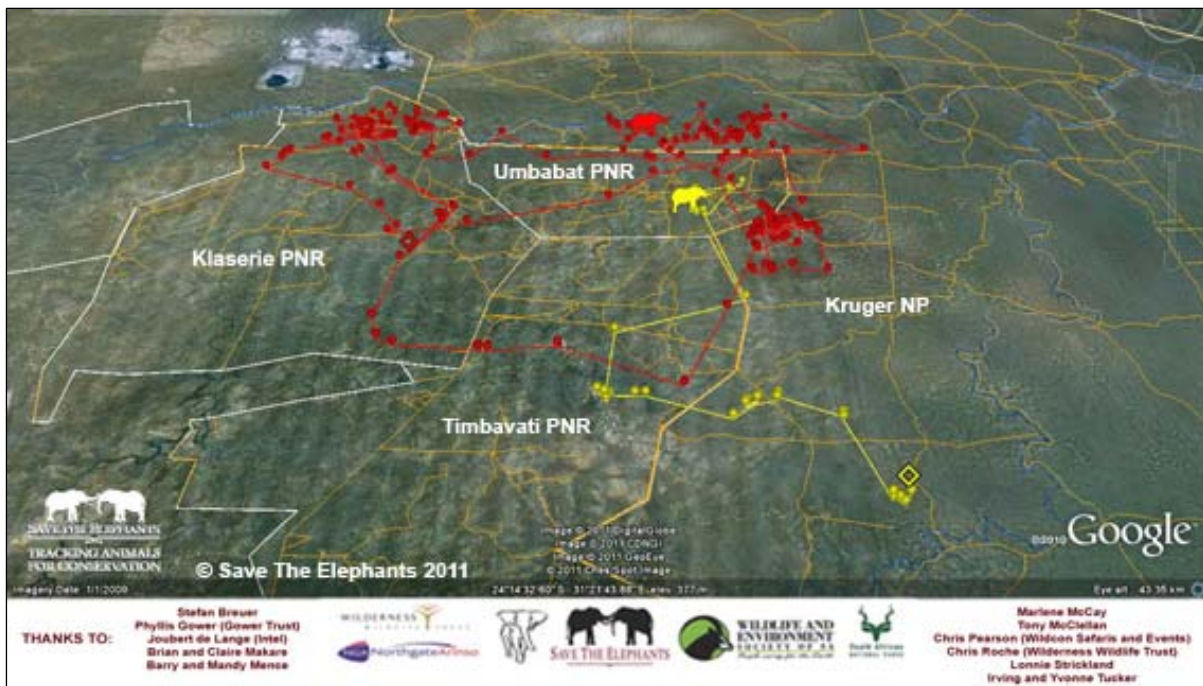
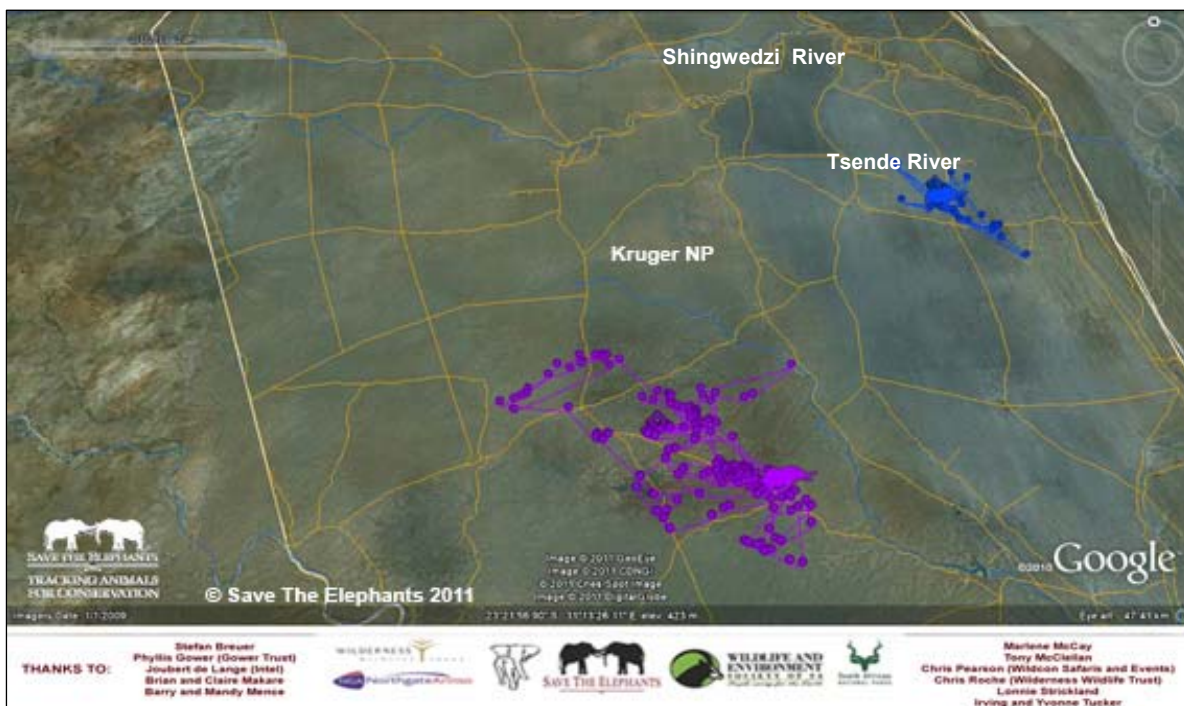


Figure 2: Positions of elephants in the APNR 2<sup>nd</sup> May 2011



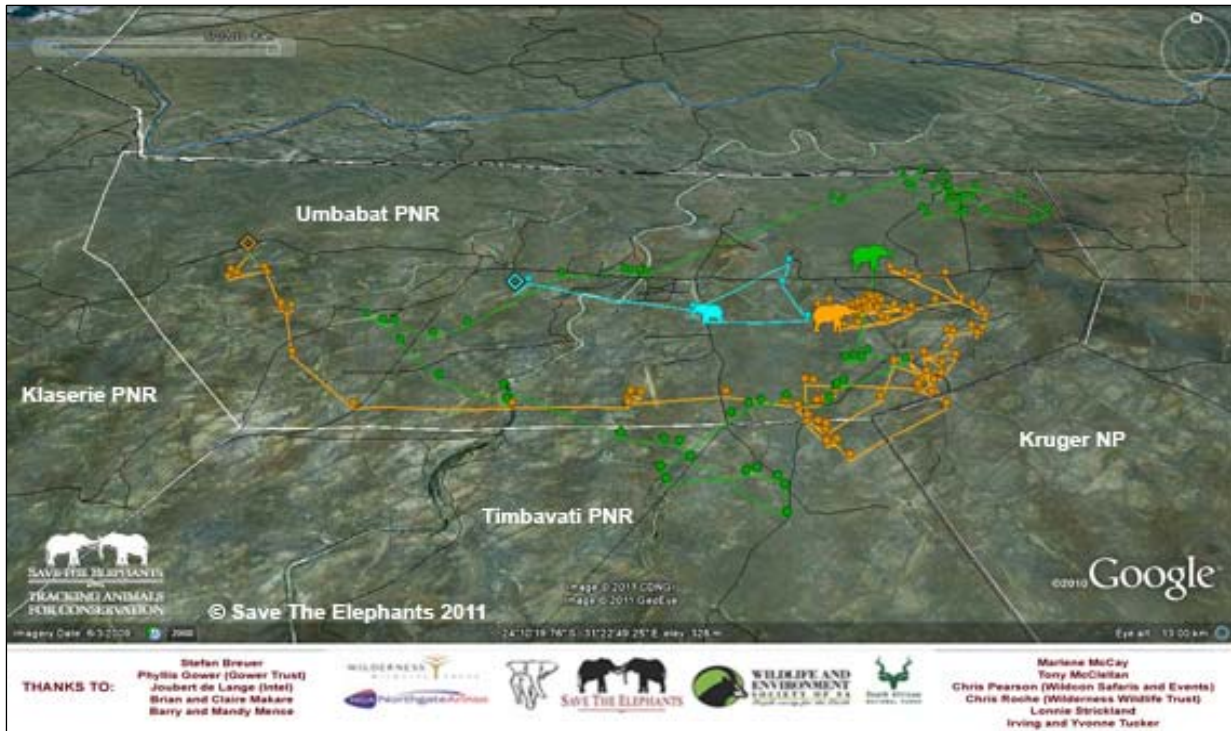
**Figure 3: Classic (red) and Barry (yellow)**

Barry, having spent most of March in Umbabat Private Nature Reserve (UPNR), traversed into Kruger NP for the start of the month. During the course of the April he moved west into Timbavati Private Nature Reserve (TPNR) and then north to return to UPNR. Classic spent the last week of March in Klaserie Private Nature Reserve (KPNR) before traversing across UPNR into Kruger, just east of UPNR, where he spent a week. He then moved through Timbavati creating a loop to return to Klaserie for a few days. Then back to UPNR where he spent the end of April just north of UPNR in Kruger. His wide movements are due to him being in musth and therefore following closely after cows.



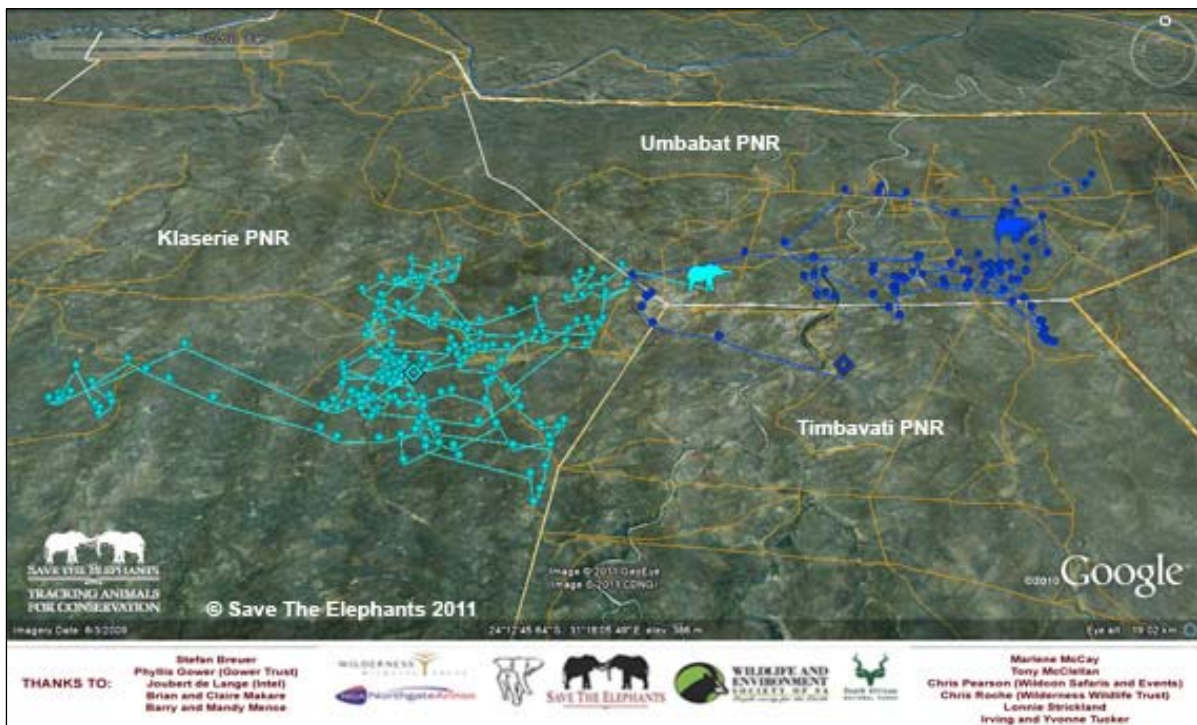
**Figure 4: Mac (blue) and Tussle (purple)**

Mac remained in a small area just south of the Shingwedzi River in northern Kruger. Tussle, who had moved from southern KPNR to the Shingwedzi region in March, spent the month near the Tsende River.



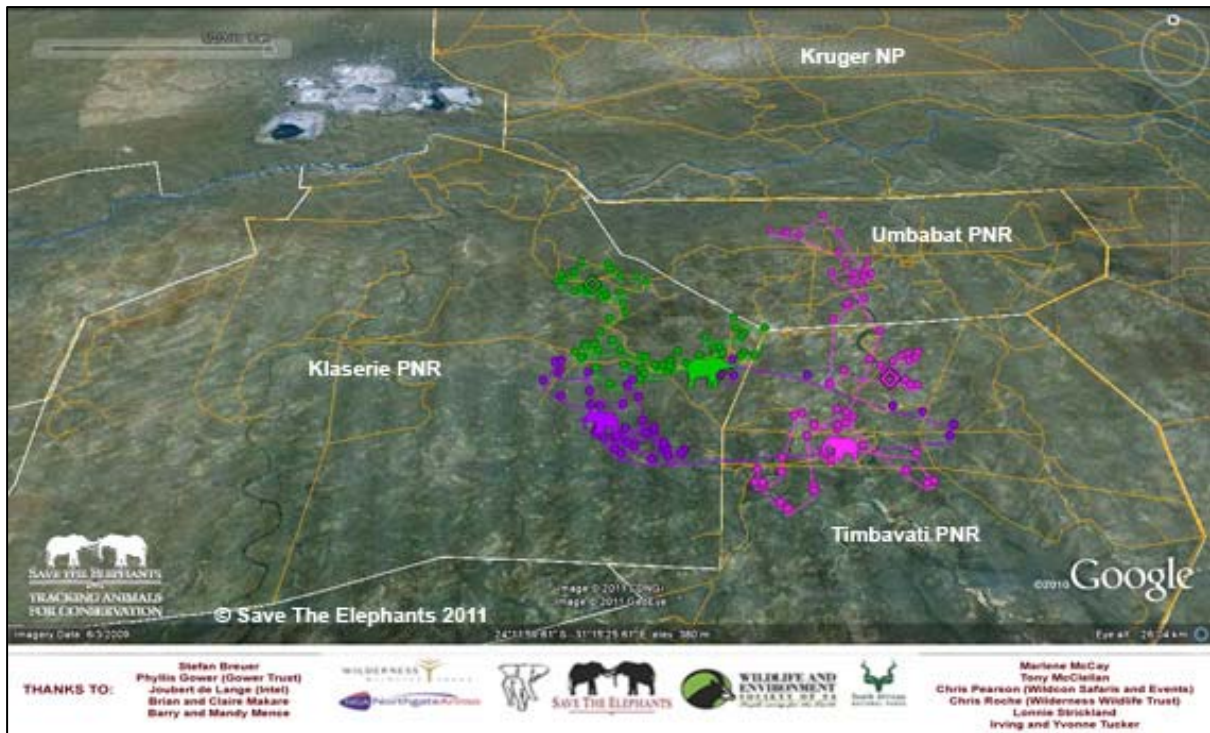
**Figure 5: Diney (turquoise), Proud (orange) and Matambu (green)**

Matambu almost completed a loop during the course of the month starting in the far north east of UPNR before heading south-west, then south-east to northern TPNR before heading north-east to his starting position. Proud could be found in western UPNR at the end of March. He then moved south before turning east along the Umbabat/Timbavati boundary to spend the rest of the month in eastern UPNR, not far from Matambu. Diney's movements were limited with her moving east across the Nhlalalumi River.



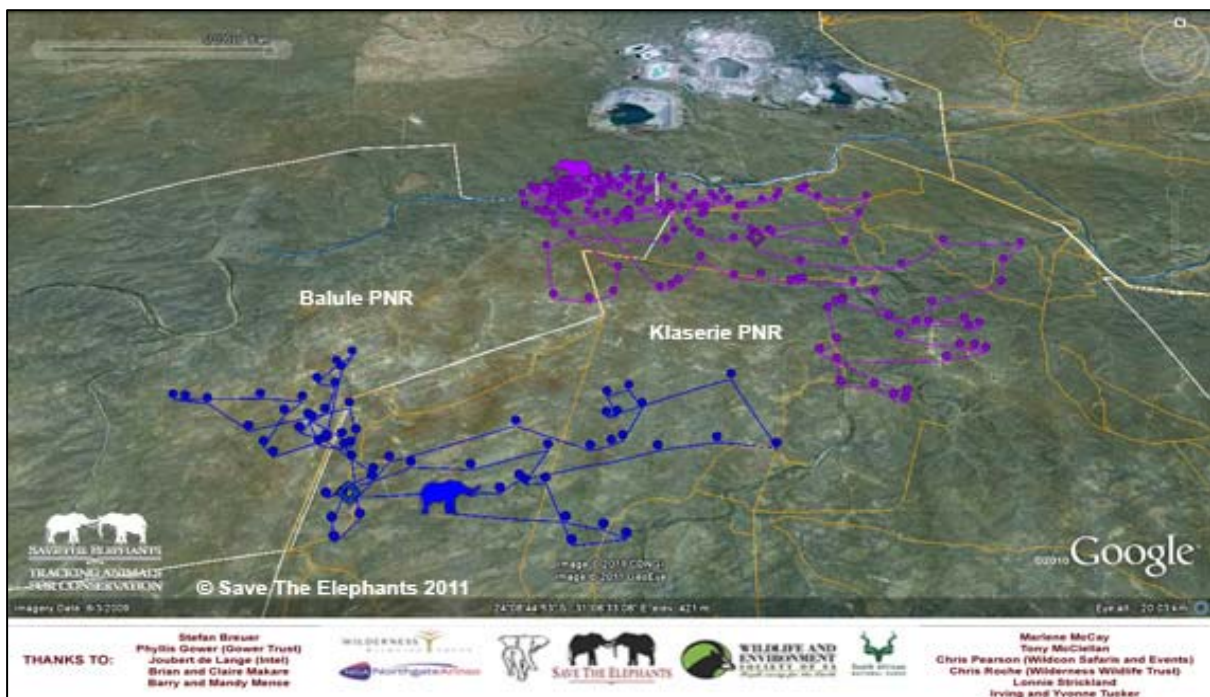
**Figure 6: Alex (blue) and Gower (turquoise)**

Gower spent the month in eastern KPNR moving into UPNR at the end of April. Alex was in TPNR at the end of March but then spent most of April in southern UPNR.



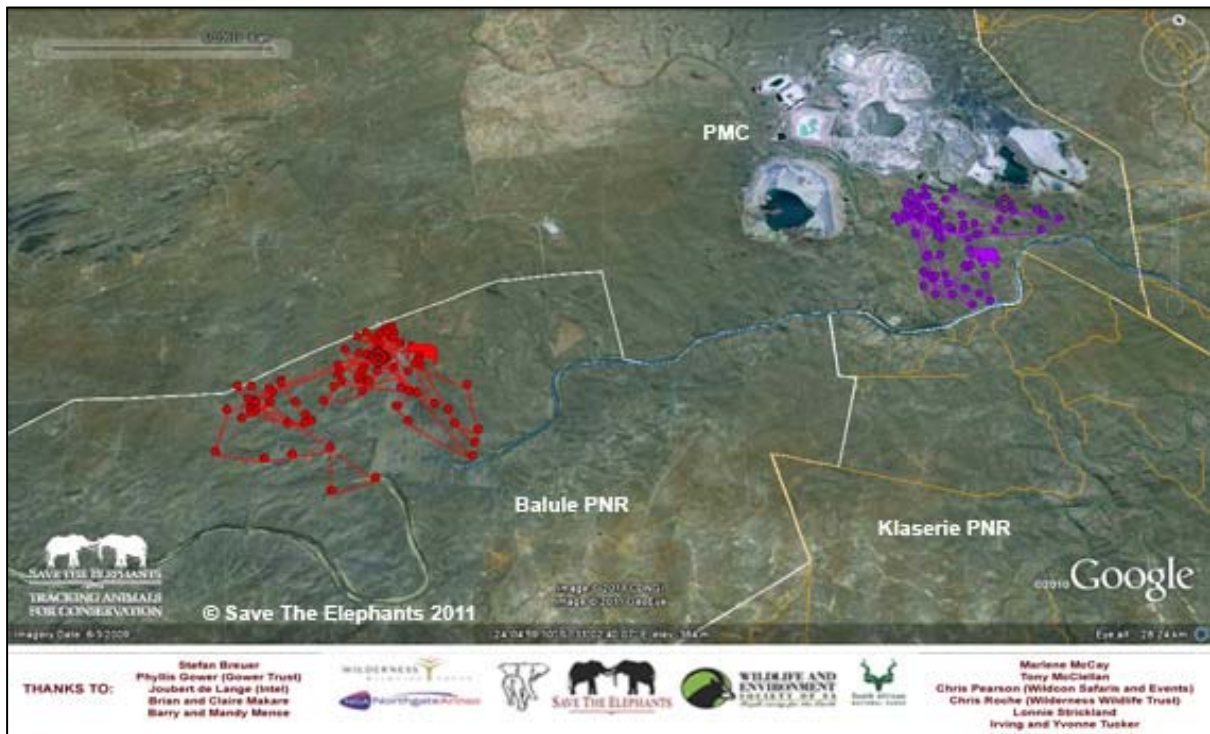
**Figure 7: Intwandamela (green), Umbabat (purple) and Summer (light purple)**

Umbabat almost completed a loop during the course of the month. She started in KPNR, then moved south-east into TPNR, crossing paths with Summer, before heading west back to KPNR. Summer was in northern TPNR at the end of March before heading north into UPNR. She then went back the way she came heading south back to TPNR. Intwandamela stayed in a small area of eastern KPNR.



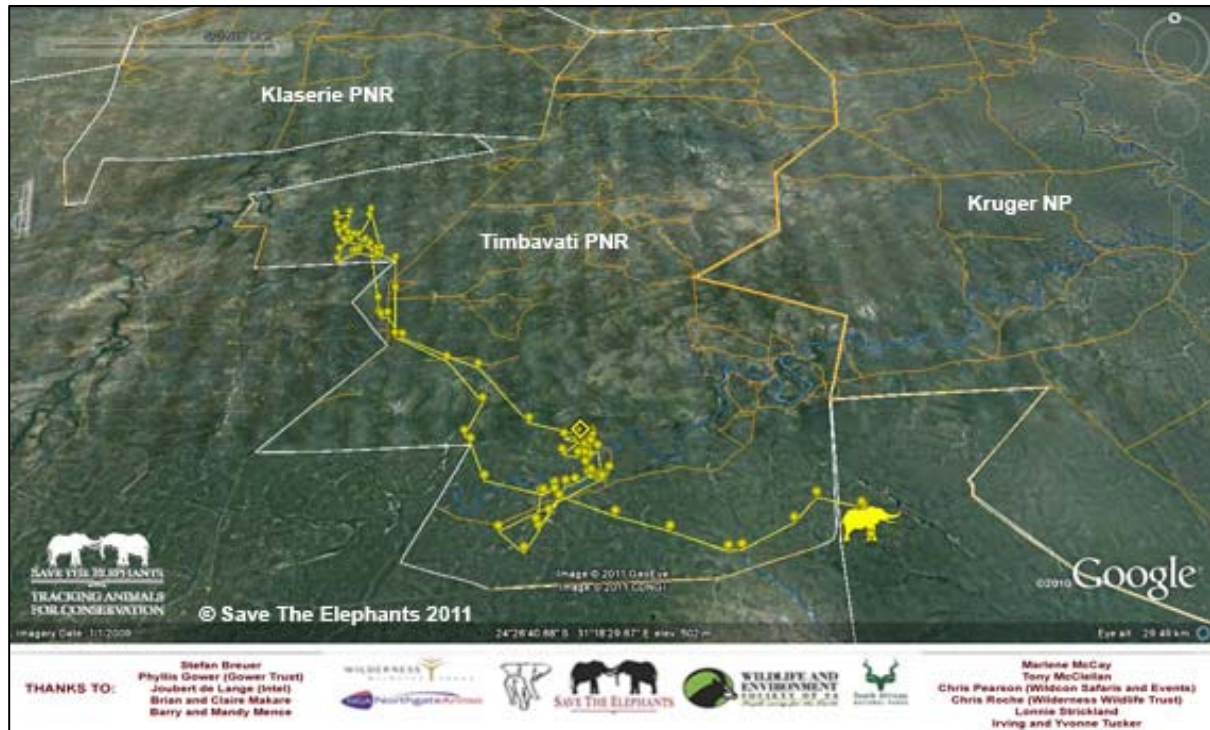
**Figure 8: Irving (blue) and Lapajuma (purple)**

Irving spent the month moving between KPNR and Balule Private Nature Reserve, first moving west into BPNR and then east back into KPNR. Lapajuma looped from northern KPNR travelling east at the end of March, then south in the first week of April, before moving north-west towards BPNR. She spent the last week of April along the Olifants River.



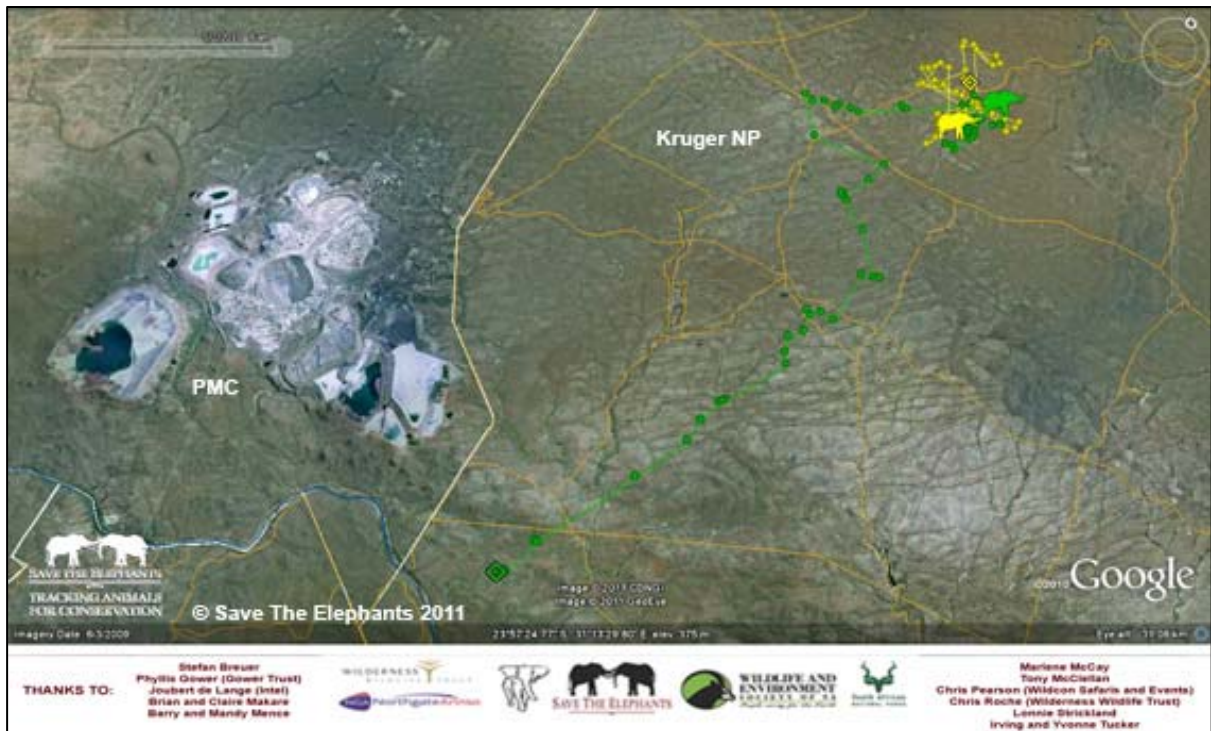
**Figure 9: Yvonne (red) and Joan (purple)**

Yvonne spent the month close to the Balule boundary west of the Olifants River whilst Joan moved between Phalaborwa Mining Company and the Olifants River.



**Figure 10: Mellow**

Mellow travelled more than 60km during the month as he travelled north-west, then retraced his path back to southern Timbavati before heading east towards Kruger where he could be found at the end of April.



**Figure 11: WESSA (yellow) and Captain Hook (green)**

Having spent most of March outside of the reserve around PMC, Captain Hook travelled approximately 25km north-east in Kruger where he crossed paths with WESSA. WESSA spent the month moving in a small area in close proximity to Captain Hook.