



**Tracking Animals for Conservation
Elephant Tracking Report No. 2: Late April to Late May 2011**

We bring you an update of the movement of 19 collared elephants in the Associated Private Nature Reserves (APNR) and Kruger National Park (KNP), South Africa. Much like April 2011, most movements have been concentrated in the Umbabat, Klaserie and Timbavati Private Nature Reserves. However more movement in Kruger National Park was observed with Captain Hook, Wessa, Tussle, Mac, Classic, Matambu and even Summer spending part or all of the month there. Yvonne and Irving made themselves at home in Balule Private Nature Reserve.

We hope to be replacing three collars in the coming month so look out for an update in the next Elephant Tracking Report.

To help you understand the elephants and their movements the first position of the month is indicated with a diamond and the last position of the month is indicated with an elephant. Cows all point to the left and bulls to the right.

We hope you find this report enjoyable and informative.
Save The Elephants – South Africa

**Report prepared by Jess Lavelle
June 2011**

**P.O. Box 960 Hoedspruit 1380 • Tel: +27 (0)15 7930369
www.savetheelephants.org**

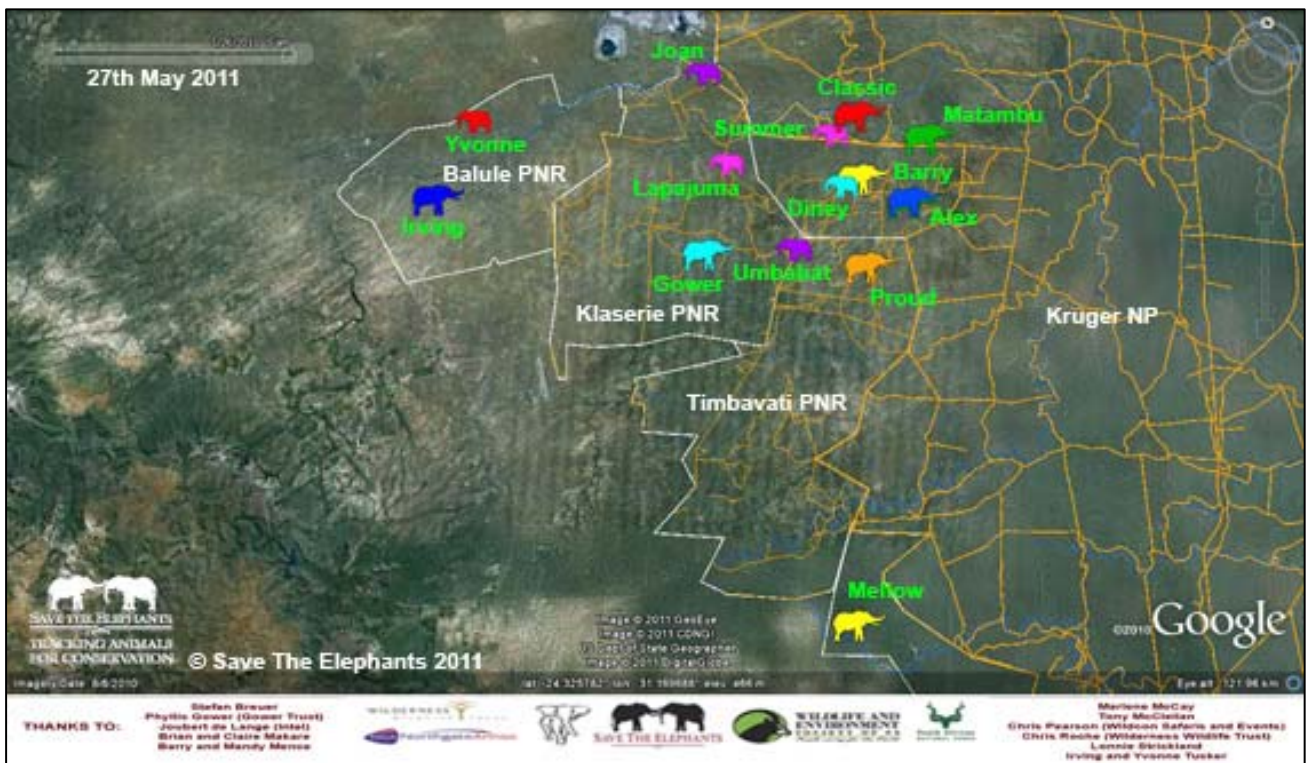


Figure 1: Positions of elephants in the APNR 27th May 2011

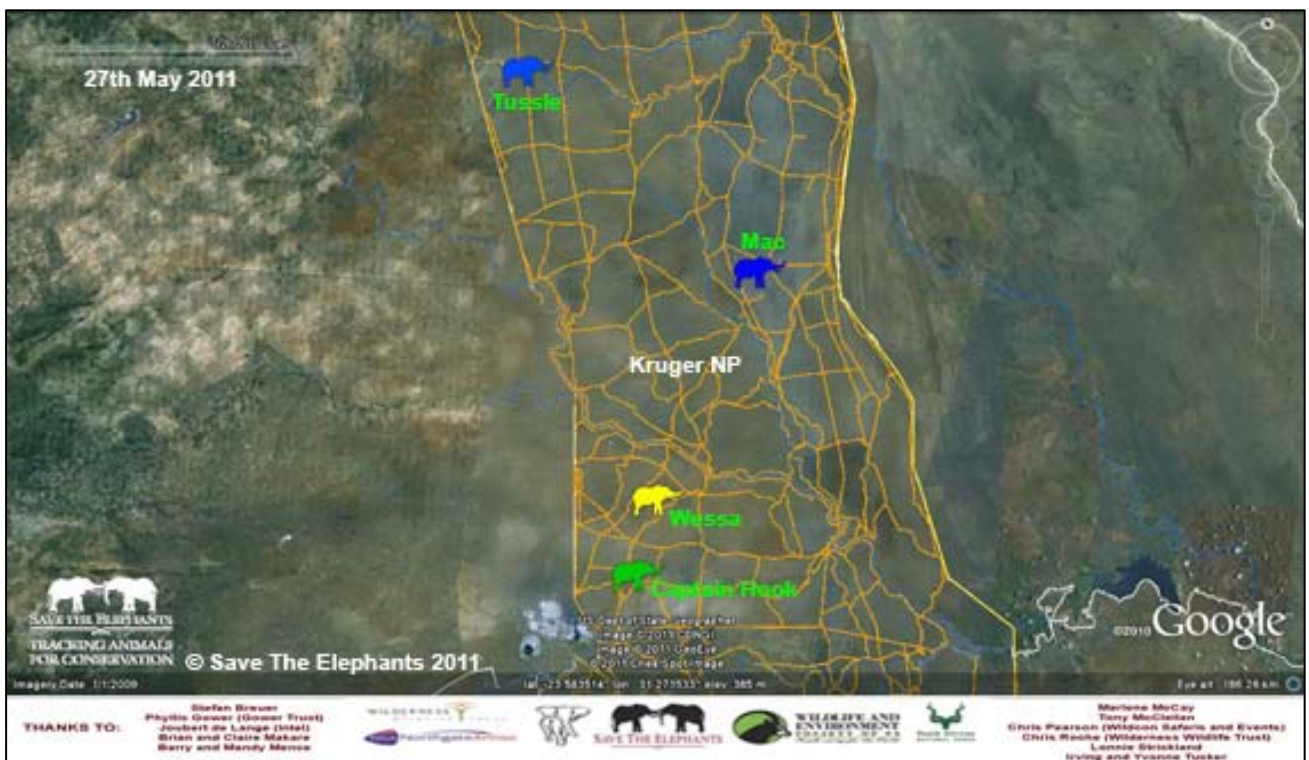


Figure 2: Positions of elephants in northern Kruger NP 27th May 2011

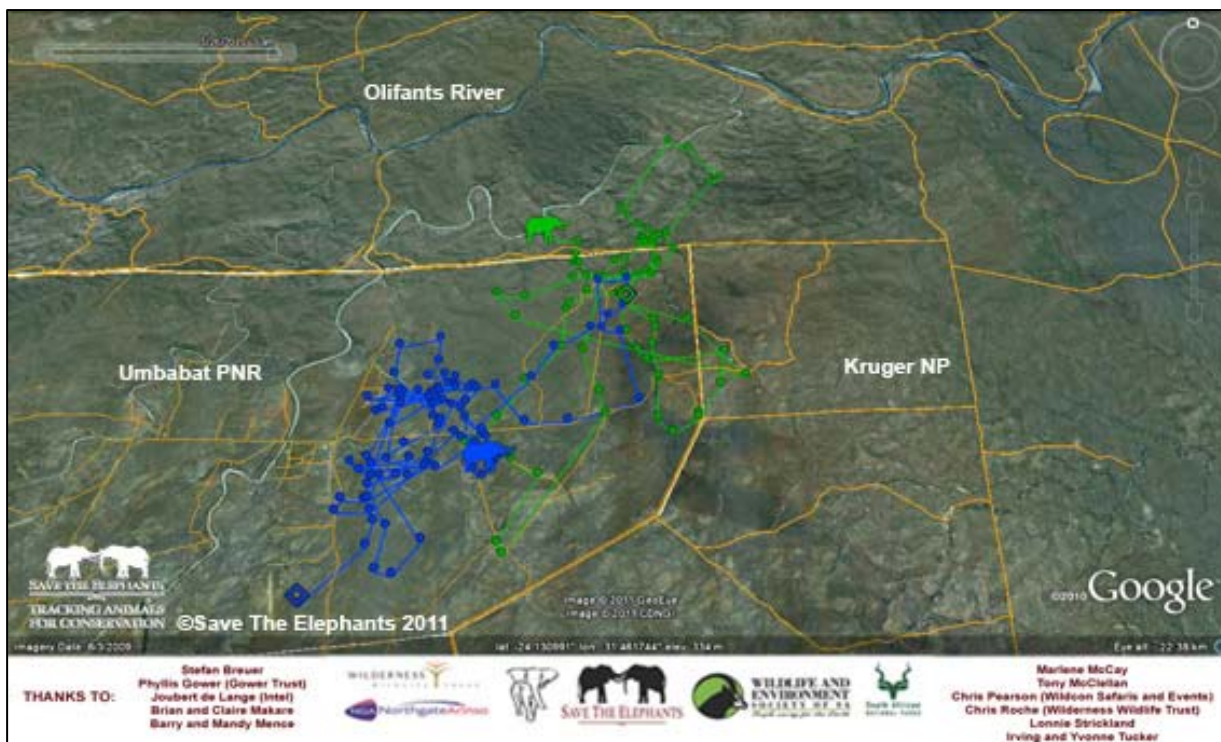


Figure 3: Alex (blue) and Matambu (green)

Alex spent the entire month in Umbabat PNR starting first in the southern part of the reserve before traversing to the northeast where he looped to return to central Umbabat, east of the river. Matambu covered a greater distance spending the beginning of May in north-eastern Umbabat PNR before looping and heading south. He then changed direction again and headed north to the river in Kruger NP where he completed a loop, traversed back into Umbabat PNR and then returned to the river.

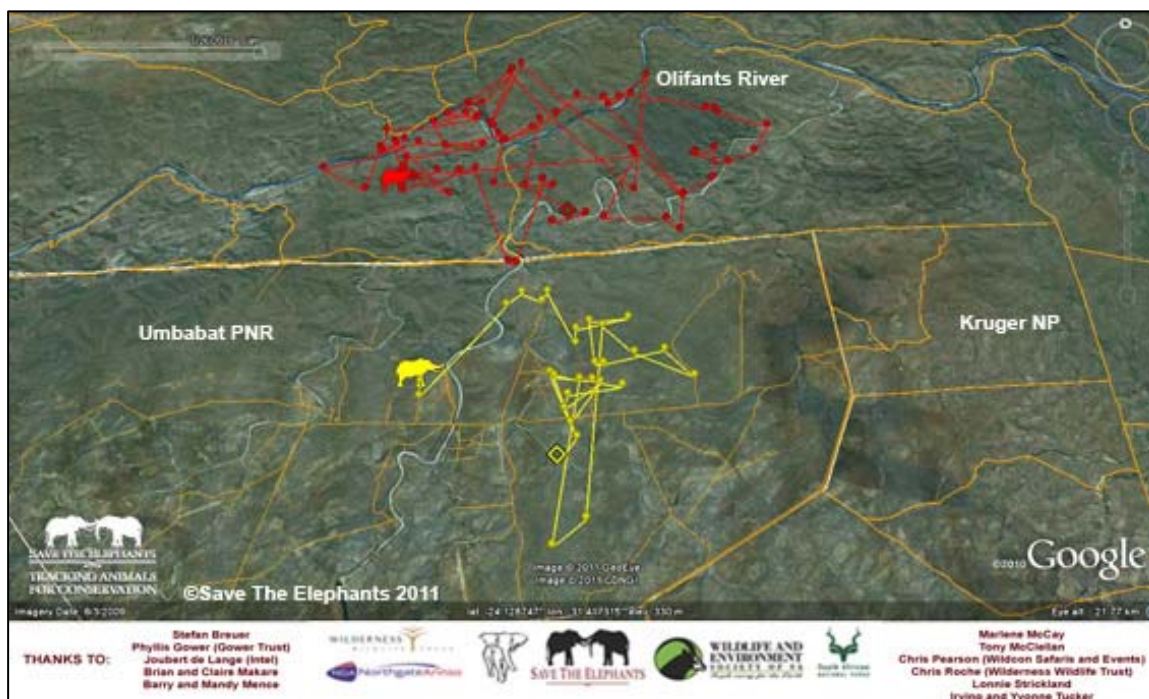


Figure 4: Classic (red) and Barry (yellow)

Barry's movements were limited with him spending the entire month in Umbabat PNR. Classic spent the month just north of the Umbabat PNR boundary traversing back and forth to the Olifants River while in full musth.

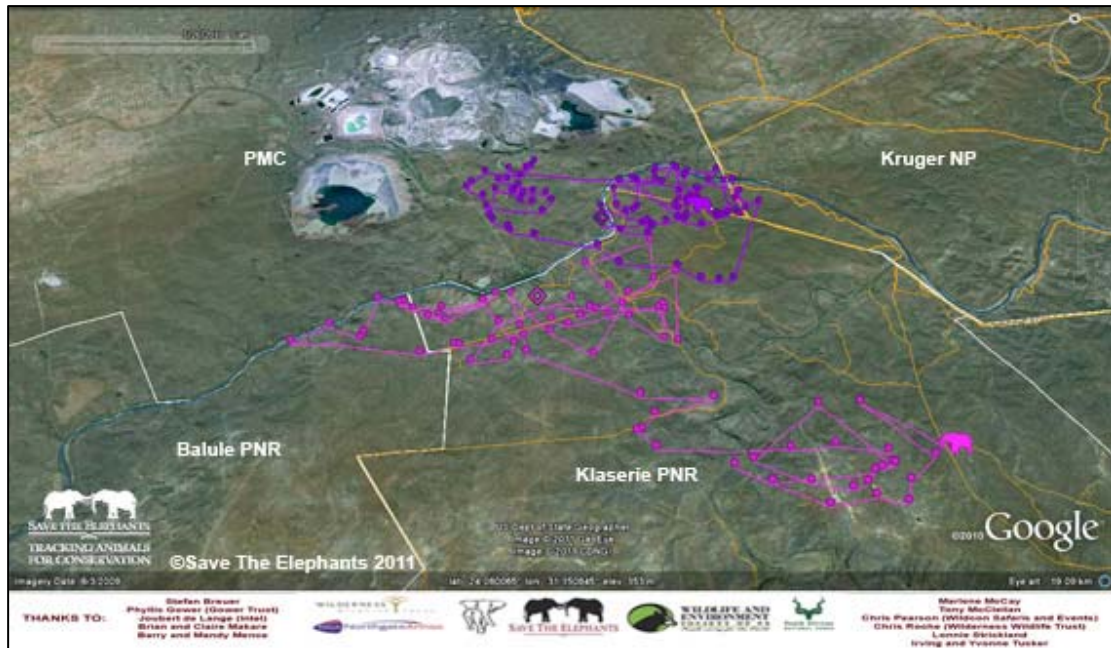


Figure 5: Joan (purple) and Lapajuma (light purple)

Joan continues to enjoy spending time near PMC and the Olifants River on the Klaserie PNR boundary. Lapajuma covered at least 70km starting the month near the Olifants River on the Klaserie boundary before heading west along the river to Balule PNR. She then returned to Klaserie PNR before heading south-east towards Umbabat PNR.

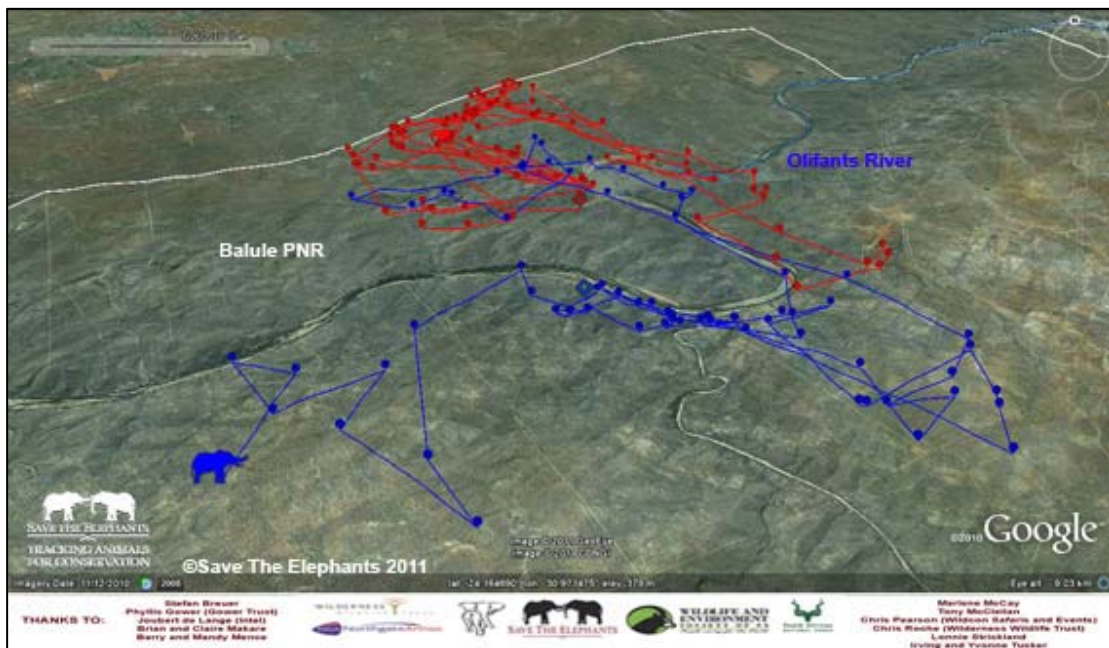


Figure 6: Yvonne (red) and Irving (blue)

Yvonne and Irving crossed paths during the month with Yvonne spending most of her time near the Balule PNR boundary and traversing to the Olifants River. Irving travelled approximately 80km during the course of the month. At the start of the month he could be found along the Olifants River before heading south-east then looping north-west to cross paths with Yvonne. He then travelled south-east along the Olifants River before heading into central Balule PNR. Finally he traversed across to western Balule occasionally drinking at the river.

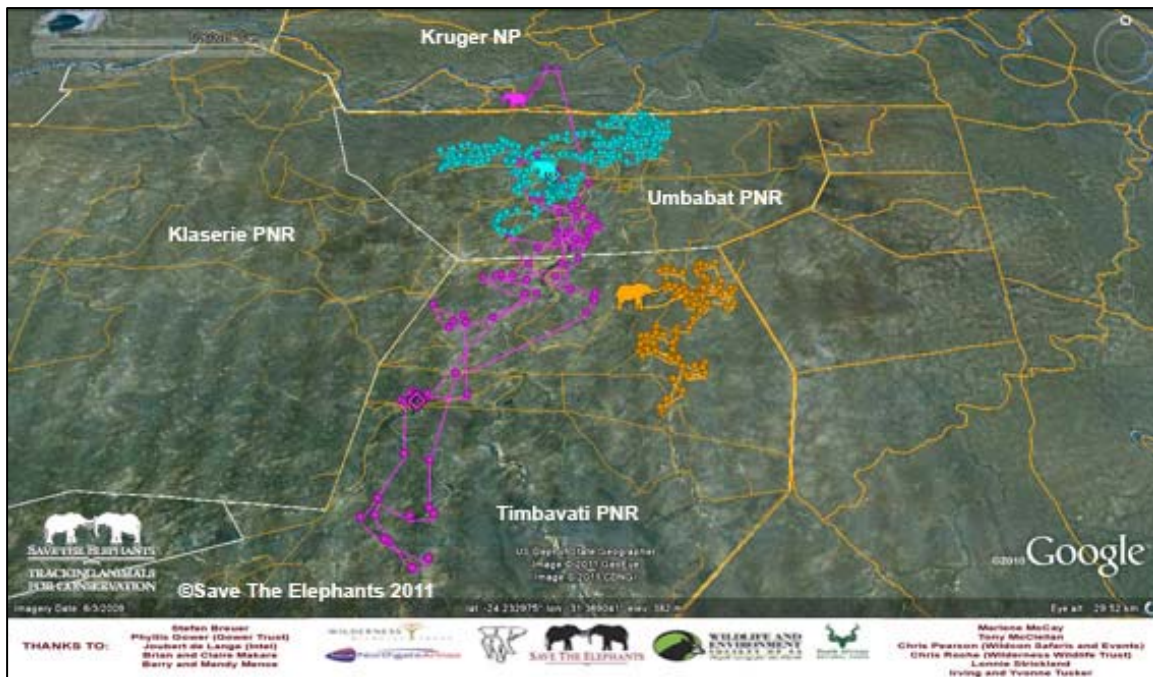


Figure 7: Summer (light purple), Diney (turquoise) and Proud (orange)

Proud spent the month in a small area of north-eastern Timbavati PNR, whilst Diney could be found in central Umbabat PNR. Summer covered a large distance starting the month in northern Timbavati PNR before heading north to Umbabat PNR. She then returned south moving all the way down to central Timbavati before looping back up to Umbabat PNR. Moving across Umbabat PNR she ended the month just north of the boundary in Kruger NP.

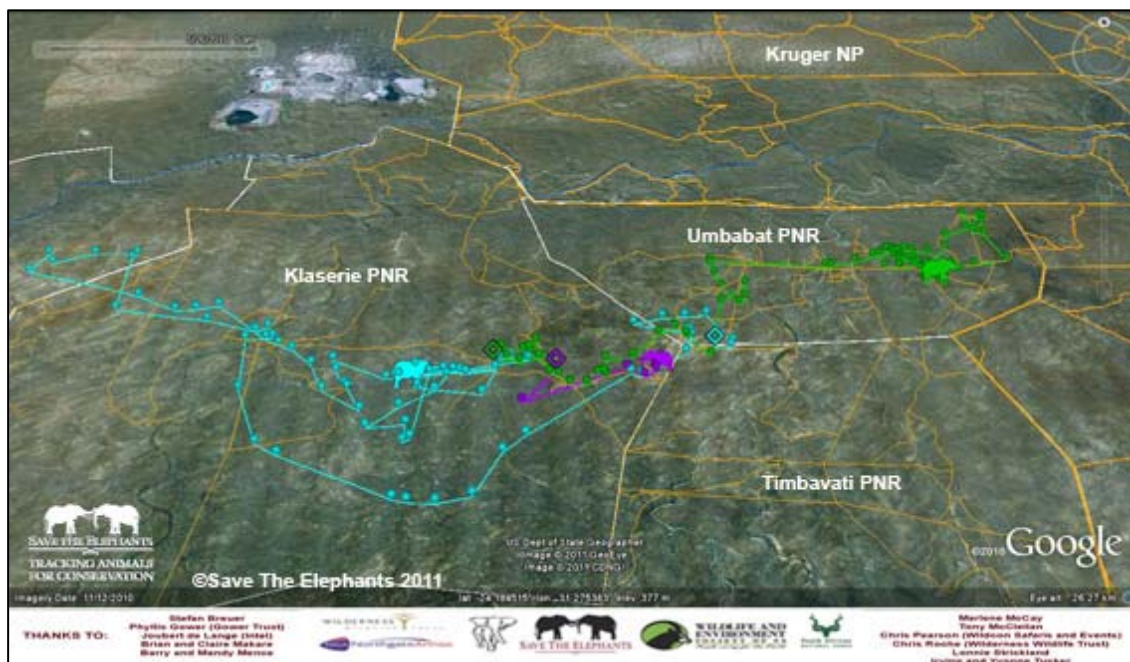


Figure 8: Gower (turquoise), Umbabat (purple) and Intwandamela (green)

Umbabat stayed in a very small area in eastern Klaserie PNR. Intwandamela could be found in eastern Klaserie PNR at the start of the month but then travelled across Umbabat PNR to spend the rest of the month in eastern Umbabat PNR. Gower started the month on the Timbavati, Klaserie and Umbabat PNRs boundary. He then traversed south-west to central Klaserie PNR before heading north-west crossing the boundary into Balule PNR. Finally he returned to central Klaserie PNR.

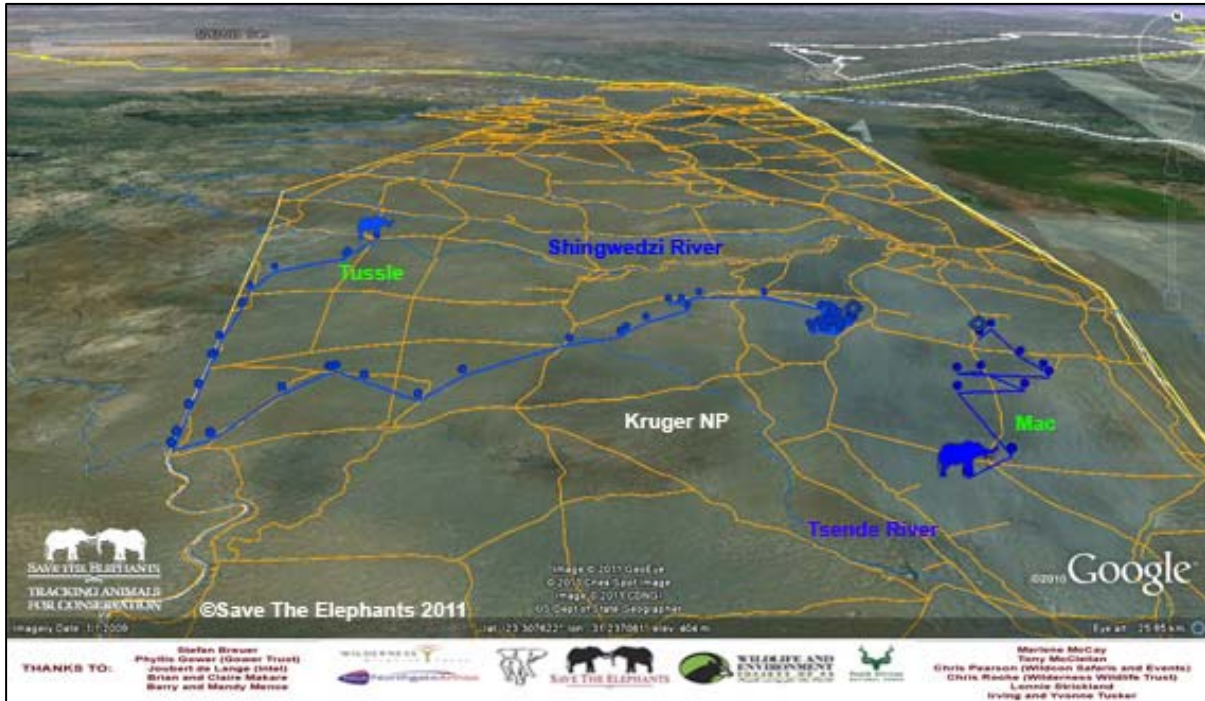


Figure 9: Tussle and Mac (both in blue)

Mac's movements were limited with him staying in the Shingwedzi region of Kruger NP. Tussle's movements were more widespread with him spending several days in one small area before moving 55km across Kruger NP and then heading north 35km along the boundary to the Shingwedzi River.

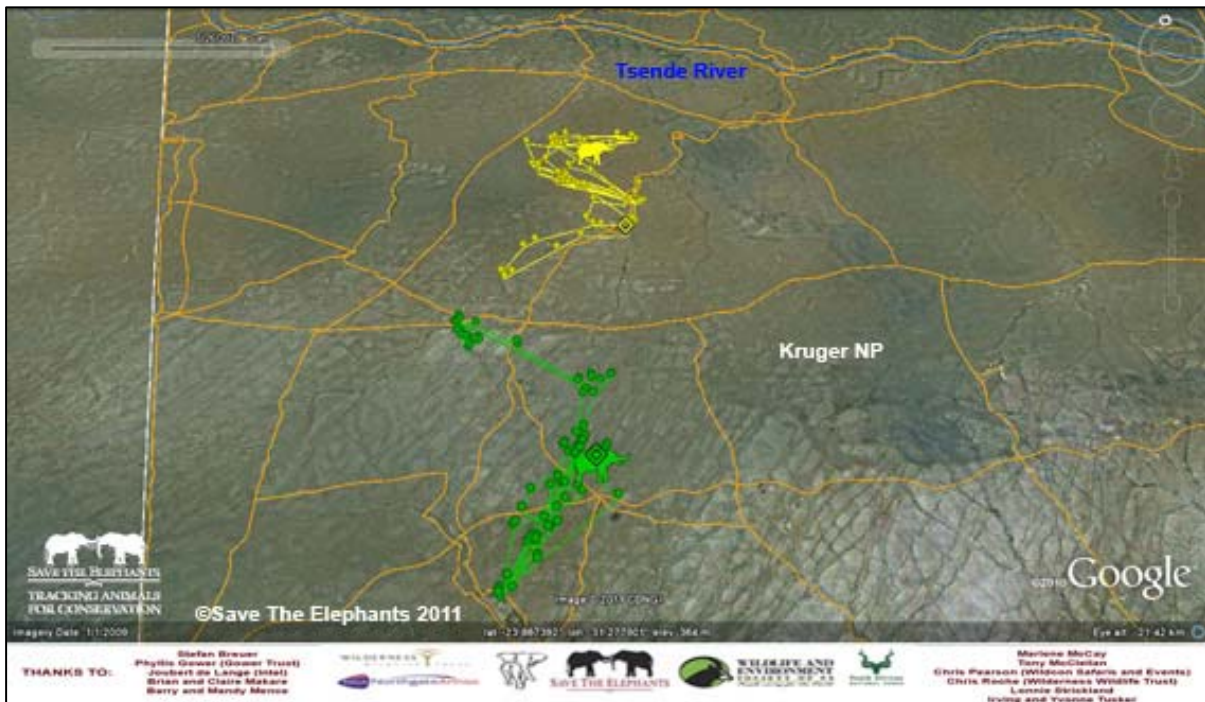


Figure 10: Wessa (yellow) and Captain Hook (green)

Wessa stayed in a relatively small area south of the Tsende River in Kruger NP. Captain Hook, having moved away from PMC spent the month traversing between tributaries of the Olifants and Tsende Rivers.

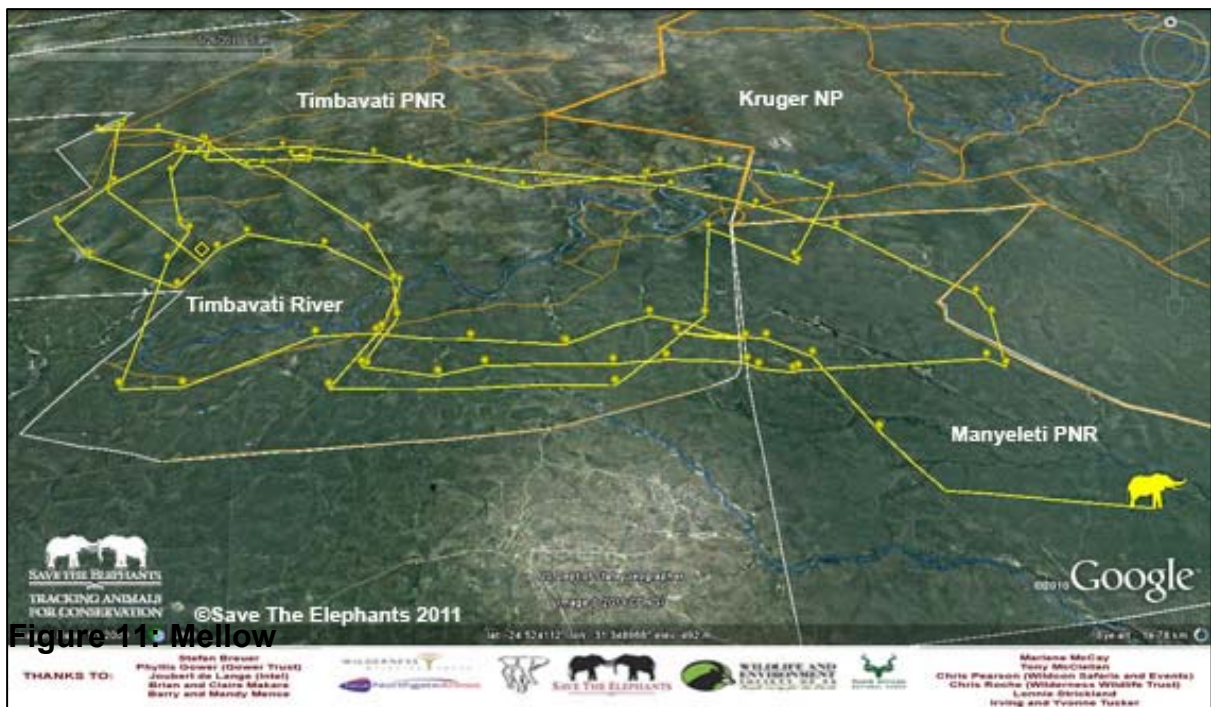


Figure 11: Wessa (yellow)

Mellow's movements have taken him across Timbavati PNR, Manyeleti PNR and into Kruger NP. During the month he travelled approximately 170km circling around the Timbavati River three times before finally heading south-east into Manyeleti PNR. While in the Timbavati, he was sighted in musth.